

Note: Some designs in this collection may have been created using unique special stitches and/or techniques. To preserve design integrity when rescaling or rotating designs in your software, always rescale or rotate designs using the handles directly on-screen.



80037-01 Cupid with Bow
4.74 X 4.67 in.
120.40 X 118.62 mm
11,133 St. ❄️



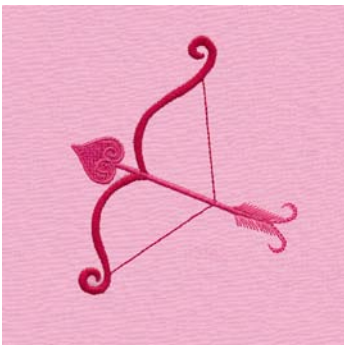
80037-02 Cupid with Arrow
4.19 X 5.01 in.
106.43 X 127.25 mm
9,787 St. ❄️ L



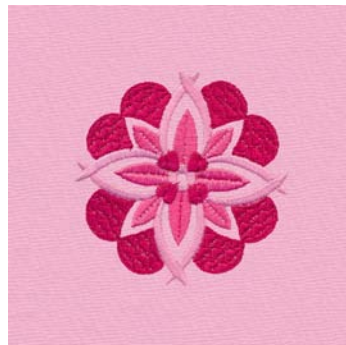
80037-03 Cupid Floral
5.24 X 4.44 in.
133.10 X 112.78 mm
12,236 St. ❄️ L



80037-04 Cupid Flying Heart Appliqué
6.66 X 3.34 in.
169.16 X 84.84 mm
15,991 St. ❄️ L



80037-05 Bow and Arrow
3.08 X 3.60 in.
78.23 X 91.44 mm
2,773 St. ❄️❄️



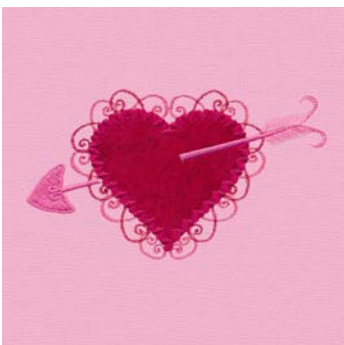
80037-06 Heart Medallion
3.23 X 3.21 in.
82.04 X 81.53 mm
10,534 St. ❄️



80037-07 Medallion Appliqué
3.61 X 3.60 in.
91.69 X 91.44 mm
10,117 St. ❄️



80037-08 Cupid Filigree Heart Appliqué
5.17 X 4.51 in.
131.32 X 114.55 mm
14,818 St. ❄️ L



80037-09 Filigree Heart Appliqué
5.63 X 3.21 in.
143.00 X 81.53 mm
8,722 St. ❄️❄️ L



80037-10 Filigree Medallion
4.55 X 4.84 in.
115.57 X 122.94 mm
20,594 St. ❄️



80037-11 Flying Mini Hearts
4.63 X 2.36 in.
117.60 X 59.94 mm
5,510 St.



80037-12 Flying Heart
4.05 X 2.03 in.
102.87 X 51.56 mm
6,645 St. ❄️

❄️ Design contains a loose fill.

❄️ Some white areas shown are not stitched.

L Design is larger than 5" (127 mm) in either direction.

S Design is smaller than 1.5" (38.1 mm) in either direction.

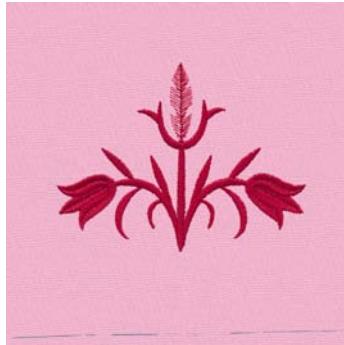
It is a violation of Copyright law to make and distribute copies of electronic designs or artwork.

Electronic designs are licensed to the original purchaser for use at one location. ©2013 OESD, LLC. All rights reserved.

Note: Some designs in this collection may have been created using unique special stitches and/or techniques. To preserve design integrity when rescaling or rotating designs in your software, always rescale or rotate designs using the handles directly on-screen.



80037-13 Sparrow
4.43 X 3.91 in.
112.52 X 99.31 mm
11,124 St. ⌘



80037-14 Floral Motif 1
4.07 X 3.11 in.
103.38 X 78.99 mm
4,553 St. ⌘



80037-15 Medallion Flower
4.63 X 5.86 in.
117.60 X 148.84 mm
12,833 St. ⚡ L



80037-16 Tall Heart Flower
3.35 X 5.03 in.
85.09 X 127.76 mm
8,402 St. ⚡ L



80037-17 Floral Motif 2
4.17 X 5.15 in.
105.92 X 130.81 mm
8,693 St. L



80037-18 Leaf Sprig
6.13 X 4.01 in.
155.70 X 101.85 mm
9,141 St. L



80037-19 Short Heart Flower
7.50 X 5.29 in.
190.50 X 134.37 mm
17,069 St. ⚡ L



80037-20 Floral Motif 3
3.35 X 3.33 in.
85.09 X 84.58 mm
7,747 St. ⌘ ⚡



80037-21 Love
5.62 X 4.02 in.
142.75 X 102.11 mm
18,526 St. ⚡ L



80037-22 Love in Motif Appliqué
4.75 X 5.00 in.
120.65 X 127.00 mm
12,733 St. ⌘



80037-23 Be Mine
6.36 X .93 in.
161.54 X 23.62 mm
5,962 St. ⌘ ⚡ L S

⌘ Design contains a loose fill.

⚡ Some white areas shown are not stitched.

L Design is larger than 5" (127 mm) in either direction.

S Design is smaller than 1.5" (38.1 mm) in either direction.

It is a violation of Copyright law to make and distribute copies of electronic designs or artwork.

Electronic designs are licensed to the original purchaser for use at one location. ©2013 OESD, LLC. All rights reserved.



Cupid & Hearts Floral

by Woo-hoo Design Studio / #80037 / 23 Designs

Listings below indicate color sample, stitching order and suggested thread color number. "I" refers to Isacord thread and "T" refers to Timeless thread. Colors beginning with 20501 refer to YLI Fine Metallics, 7 refer to Yenmet Metallic, 8 refer to YLI Variations Variegated Thread and 9 refer to Isacord Multicolor Variegated.

80037-01 Cupid with Bow I T
 ■ 1. Single Color Design1906 10166

80037-02 Cupid with Arrow
 ■ 1. Single Color Design1906 10166

80037-03 Cupid Floral
 ■ 1. Single Color Design1906 10166

80037-04 Cupid Flying Heart Appliqué
 ■ 1. Red Wings.....1906 10166
 ■ 2. Heart Placement Stitch2520 10151
 ■ 3. Cut Line & Tackdown.....2520 10151
 ■ 4. Cover Stitch.....2520 10151
 ■ 5. White Detail.....0015 28154

80037-05 Bow and Arrow
 ■ 1. Bow1906 10166
 ■ 2. Arrow.....2320 10157

80037-06 Heart Medallion
 ■ 1. Pink Detail2520 10151
 ■ 2. Light Pink Detail2550 10142
 ■ 3. Dark Pink Detail2300 10163

80037-07 Medallion Appliqué
 ■ 1. Dark Pink Detail2300 10163
 ■ 2. Bright Pink Detail.....2220 10148
 ■ 3. Circle Placement Stitch1906 10166
 ■ 4. Cut Line & Tackdown.....1906 10166
 ■ 5. Cover Stitch.....1906 10166
 ■ 6. Light Pink Detail2550 10142

80037-08 Cupid Filigree Heart Appliqué
 ■ 1. Pink Detail2520 10151
 ■ 2. Heart Placement Stitch2300 10163
 ■ 3. Cut Line & Tackdown.....2300 10163
 ■ 4. Cover Stitch.....2300 10163
 ■ 5. White Detail0015 28154

80037-09 Filigree Heart Appliqué T
 ■ 1. Light Fringe2320 10157
 ■ 2. Dark Fringe1906 10166
 ■ 3. Heart Placement Stitch2300 10163
 ■ 4. Cut Line & Tackdown.....2300 10163
 ■ 5. Cover Stitch.....2300 10163
 ■ 6. Arrow.....2550 10142

80037-10 Filigree Medallion
 ■ 1. Single Color Design1906 10166

80037-11 Flying Mini Hearts
 ■ 1. Wings1906 10166
 ■ 2. Hearts.....2320 10157

80037-12 Flying Heart
 ■ 1. Single Color Design1906 10166

80037-13 Sparrow
 ■ 1. Single Color Design1906 10166

80037-14 Floral Motif 1
 ■ 1. Single Color Design1906 10166

80037-15 Medallion Flower
 ■ 1. Pink Detail2520 10151
 ■ 2. Light Pink Detail2550 10142
 ■ 3. Dark Pink Detail2300 10163
 ■ 4. Leaves & Stems1906 10166

80037-16 Tall Heart Flower
 ■ 1. Single Color Design1906 10166

80037-17 Floral Motif 2 I T
 ■ 1. Single Color Design1906 10166

80037-18 Leaf Sprig
 ■ 1. Single Color Design1906 10166

80037-19 Short Heart Flower
 ■ 1. Single Color Design1906 10166

80037-20 Floral Motif 3
 ■ 1. Single Color Design1906 10166

80037-21 Love
 ■ 1. Border1906 10166
 ■ 2. Shadow2520 10151
 ■ 3. Letters2550 10142

80037-22 Love in Motif Appliqué
 ■ 1. Background2320 10157
 ■ 2. Outer Border2550 10142
 ■ 3. Heart Placement Stitch2520 10151
 ■ 4. Cut Line & Tackdown.....2520 10151
 ■ 5. Cover Stitch & Shadow2520 10151
 ■ 6. Letters1906 10166

80037-23 Be Mine
 ■ 1. Letters1906 10166
 ■ 2. Bottom Detail.....2320 10157