

Note: Some designs in this collection may have been created using unique special stitches and/or techniques. To preserve design integrity when rescaling or rotating designs in your software, always rescale or rotate designs using the handles directly on-screen.



CC07801 Jardin des Fleurs (Appliqué)
5.60 X 4.84 in.
142.24 X 122.94 mm
40,330 St. **L**



CC07802 Fleur du Soleil (Appliqué)
5.69 X 4.83 in.
144.53 X 122.68 mm
32,995 St. **L**



CC07803 Aix Provence Arles (Appliqué)
5.06 X 4.41 in.
128.52 X 112.01 mm
24,950 St. **L**



CC07804 Chateau Tournesol (Appliqué)
5.09 X 4.58 in.
129.29 X 116.33 mm
33,164 St. **L**



CC07805 Two Sunflowers (Appliqué)
4.42 X 4.82 in.
112.27 X 122.43 mm
23,551 St.



CC07806 Three Sunflowers (Appliqué)
4.31 X 2.73 in.
109.47 X 69.34 mm
20,369 St.



CC07807 Single Sunflower (Appliqué)
3.81 X 4.28 in.
96.77 X 108.71 mm
18,000 St.



CC07808 Single Sunflower Head (Appliqué)
3.18 X 3.00 in.
80.77 X 76.20 mm
12,392 St.

⌘ Design contains a loose fill.
⚙ Some white areas shown are not stitched.

L Design is larger than 5" (127 mm) in either direction.
S Design is smaller than 1.5" (38.1 mm) in either direction.

It is a violation of Copyright law to make and distribute copies of software or artwork.

Software is licensed to the original purchaser for use at one location. ©Geoff Allen, licensed by Ruth Levison Design for use in home embroidery. All rights reserved.



FLEUR DU SOLEIL BY GEOFF ALLEN

PACK 61078 • 8 DESIGNS

Listings below indicate color sample, stitching order and suggested thread color number in Isacord, YLI Fine Metallic, Yenmet or YLI Variegated threads.

CC07801 Jardin des Fleurs (Appliqué)

1. Background Appliqué Placement Stitch	0822
2. Background Appliqué Tackdown	0822
3. Leaves & Stems	5933
4. Leaves & Stems Highlights	5833
5. Leaves & Stems Shading	5944
6. Leaves & Stems Highlights	0442
7. Backside of Banner	0721
8. Banner	0731
9. Banner Highlights	0532
10. Banner Outlines	0822
11. Flower Centers Appliqué Placement Stitch ..	0904
12. Flower Centers Appliqué Tackdown	0904
13. Lettering	1703
14. Flowers	0904
15. Flowers Shading	0931
16. Flowers Highlights	0504
17. Flower Centers Shading	1322
18. Flower Centers Shading	1355

CC07802 Fleur du Soleil (Appliqué)

1. Background Appliqué Placement Stitch	0504
2. Background Appliqué Tackdown	0504
3. Leaves & Stems	5933
4. Leaves & Stems Shading	5833
5. Leaves & Stems Highlights	0442
6. Leaves & Stems Shading	5944
7. Banner Shading	1903
8. Banner	1703
9. Banner Shading & Outlines	2115
10. Leaves Outlines	5944
11. Flower Centers Appliqué Placement Stitch ..	0904
12. Flower Centers Appliqué Tackdown	0904
13. Flowers	0904
14. Flowers Shading	0931
15. Flowers Highlights	0504
16. Flower Centers Shading	1322
17. Flower Centers Shading	1355
18. Lettering	0703

CC07803 Aix Provence Arles (Appliqué)

1. Background Appliqué Placement Stitch	1322
2. Background Appliqué Tackdown	1322
3. Leaves & Stem	5933
4. Leaves & Stem Highlights	5833
5. Leaves & Stem Highlights	0442
6. Leaves & Stem Shading	5944
7. Banner Shadows	0940
8. Banner Shading	0821
9. Banner	0622
10. Banner Outlines	0940
11. Flower Center Appliqué Placement Stitch ..	0904
12. Flower Center Appliqué Tackdown	0904
13. Flower	0904
14. Flower Shading	0931
15. Flower Highlights	0504
16. Flower Center Shading	1322
17. Flower Center Shading	1355
18. Lettering	1543

CC07804 Chateau Tournesol (Appliqué)

1. Background Appliqué Placement Stitch	0622
2. Background Appliqué Tackdown	0622
3. Banner Shadows	0940
4. Banner Shading	0821
5. Banner	0622
6. Banner Outlines	0940
7. Leaves	5933
8. Leaves Highlights	5833
9. Leaves Highlights	0442
10. Leaves Shading	5944
11. Flower Centers Appliqué Placement Stitch ..	0904
12. Flower Centers Appliqué Tackdown	0904
13. Flowers	0904
14. Flowers Shading	0931
15. Flowers Highlights	0504
16. Flower Centers Shading	1322
17. Flower Centers Shading	1355
18. Lettering	1543

CC07805 Two Sunflowers (Appliqué)

1. Leaves & Stems	5933
2. Leaves & Stems Highlights	5833
3. Leaves & Stems Highlights	0442
4. Leaves & Stems Shading	5944
5. Flower Centers Appliqué Placement Stitch ..	0904
6. Flower Centers Appliqué Tackdown	0904
7. Flowers	0904
8. Flowers Shading	0931
9. Flowers Highlights	0504
10. Flower Centers Shading	1322
11. Flower Centers Shading	1355

CC07806 Three Sunflowers (Appliqué)

1. Leaves	5933
2. Leaves Highlights	5833
3. Leaves Highlights	0442
4. Leaves Shading	5944
5. Flower Centers Appliqué Placement Stitch ..	0904
6. Flower Centers Appliqué Tackdowns	0904
7. Flowers	0904
8. Flowers Shading	0931
9. Flowers Highlights	0504
10. Flower Centers Shading	1322
11. Flower Centers Shading	1355

CC07807 Single Sunflower (Appliqué)

1. Leaves & Stem	5933
2. Leaves & Stem Highlights	5833
3. Leaves & Stem Highlights	0442
4. Leaves & Stem Shading	5944
5. Flower Center Appliqué Placement Stitch ..	0904
6. Flower Center Appliqué Tackdown	0904
7. Flower	0904
8. Flower Shading	0931
9. Flower Highlights	0504
10. Flower Center Shading	1322
11. Flower Center Shading	1355

CC07808 Single Sunflower Head (Appliqué)

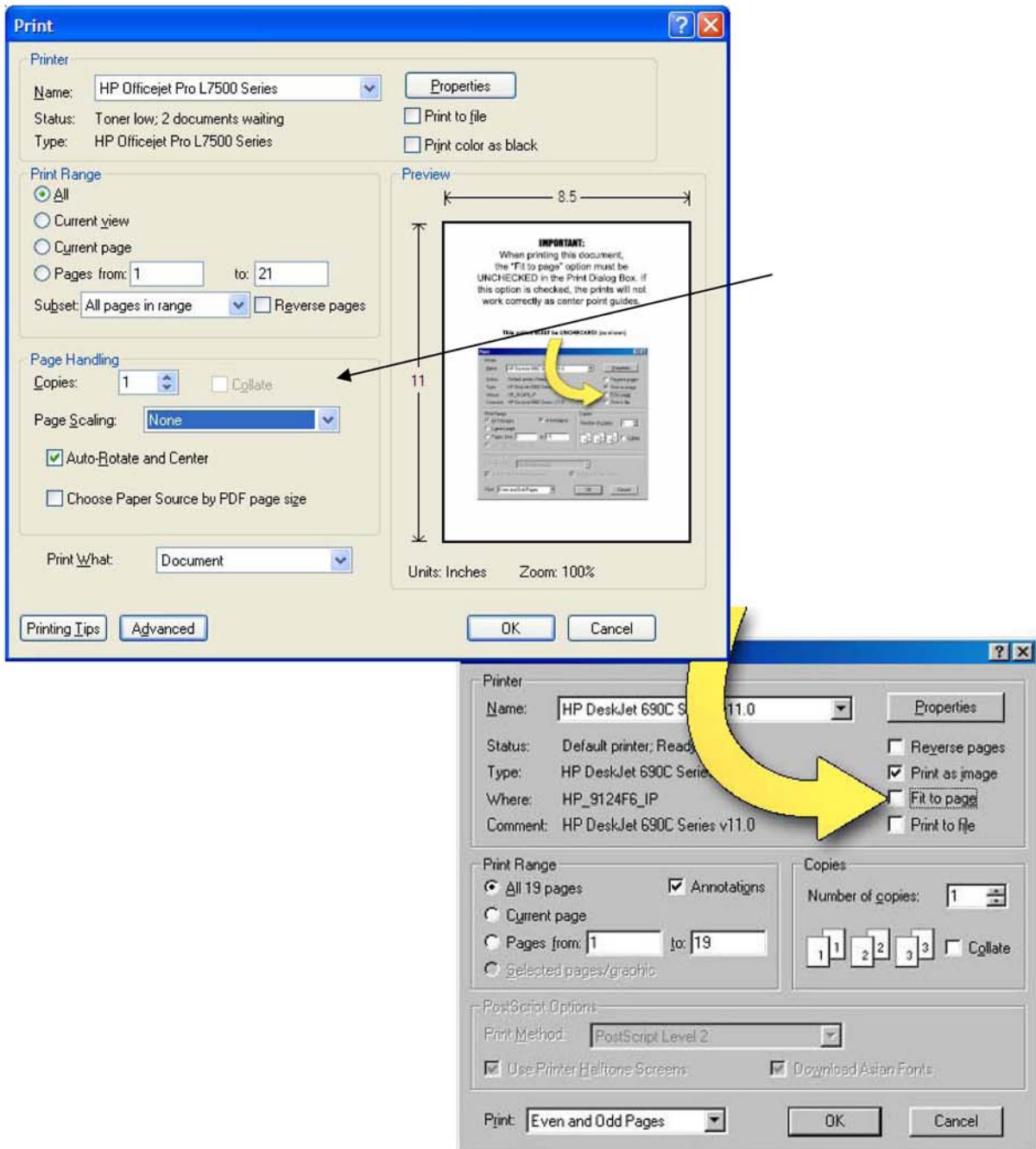
1. Flower Center Appliqué Placement Stitch ..	0904
2. Flower Center Appliqué Tackdown	0904
3. Flower	0904
4. Flower Shading	0931
5. Flower Highlights	0504
6. Flower Center Shading	1322
7. Flower Center Shading	1355

It is a violation of Copyright law to make and distribute copies of software or artwork.

Software is licensed to the original purchaser for use at one location. ©Geoff Allen, licensed by Ruth Levison Design for use in home embroidery. All rights reserved.

IMPORTANT:

When printing this document, the “Fit to page” option must be **UNCHECKED** or the “Page Scaling” option must be set to **NONE** depending on your printers options. If this option is set incorrectly, the prints will not work correctly as patterns because they will not print at actual size.



1. Print out the necessary pages from the PDF of the appliqué pattern(s).
2. Mark the right side of the pattern pieces so you'll know which direction to lay the pattern on the fabric.
3. Lightly spray the wrong side of the pattern pieces with temporary adhesive spray and allow it to set for a few minutes.
4. Place the pattern pieces on the right side of the fabric and carefully cut them out. **PHOTO 1**
5. Sew the placement stitch on your hooped fabric. **PHOTO 2**
6. With the paper still stuck to the right side of the appliqué fabric, spray the wrong side of the fabric with temporary spray adhesive.
7. Place the fabric inside the sewing placement stitch so that it matches the stitching line then remove the paper pattern. **PHOTO 3**
8. Sew the tackdown. **PHOTO 4**
9. Sew the remainder of the design and repeat for any remaining pieces. **PHOTO 5**

NOTE: The patterns are sized for the designs as they were made. If you resize the design, you will need to resize the pattern the same amount. You can print out the pattern at the normal size then copy it on a copy machine at the changed size, i.e. resize the designs to 80%, resize the printed pattern to 80%.

TIP: When Printing the patterns, make sure that the “Fit to page” option is UNCHECKED in the Print Dialog Box. If this option is checked the printed patterns will not be actual size.

