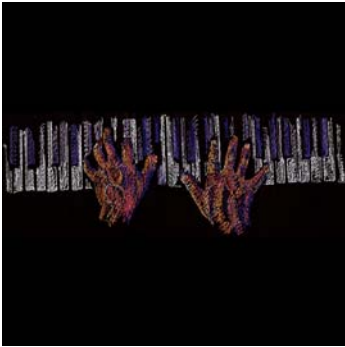


Note: Some designs in this collection may have been created using unique special stitches and/or techniques. To preserve design integrity when rescaling or rotating designs in your software, always rescale or rotate designs using the handles directly on-screen.



12369-01 Piano Player
3.22 X 8.77 in.
81.79 X 222.76 mm
10,431 St. **⌘ L**



12369-02 Bassist
4.48 X 8.23 in.
113.79 X 209.04 mm
10,184 St. **⌘ L**



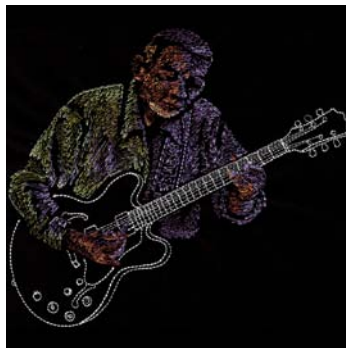
12369-03 Fiddle Player
4.66 X 6.01 in.
118.36 X 152.65 mm
8,889 St. **⌘ L**



12369-04 Drummer
4.52 X 5.46 in.
114.81 X 138.68 mm
6,796 St. **⌘ L**



12369-05 Trumpet Player
3.67 X 5.93 in.
93.22 X 150.62 mm
6,229 St. **⌘ L**



12369-06 Guitar Player
5.42 X 6.17 in.
137.67 X 156.72 mm
10,011 St. **⌘ L**



12369-07 Sax Player
4.39 X 6.96 in.
111.51 X 176.78 mm
8,497 St. **⌘ L**



12369-08 Trombone Player
3.98 X 7.81 in.
101.09 X 198.37 mm
5,712 St. **⌘ L**



12369-09 Clarinet Player
4.90 X 6.28 in.
124.46 X 159.51 mm
9,622 St. **⌘ L**



12369-10 Colorful Notes
1.38 X 1.13 in.
35.05 X 28.70 mm
477 St. **⌘ S**

⌘ Design contains a loose fill.
⌘ Some white areas shown are not stitched.

L Design is larger than 5" (127 mm) in either direction.
S Design is smaller than 1.5" (38.1 mm) in either direction.

Listings below indicate color sample, stitching order and suggested thread color number in Isacord, YLI Fine Metallic, Yenmet or YLI Variegated threads.

12369-01 Piano Player

1. White Details	0101
2. Light Purple Details	3251
3. Purple Details	3211
4. Pink Details	2320
5. Dark Purple Details	3541
6. Dark Brown Details	1355
7. Medium Brown Details	1233
8. Orange Details	0922

12369-02 Bassist

1. White Details	0101
2. Dark Brown Details	1344
3. Medium Brown Details	1233
4. Medium Purple Details	2920
5. Dark Purple Details	3110
6. Light Purple Details	3130
7. Orange Details	1115
8. Tan Details	0731

12369-03 Fiddle Player

1. Maroon Details	2222
2. Dark Brown Details	1055
3. Medium Brown Details	1154
4. Light Red Details	1921
5. Dark Purple Details	3211
6. Light Purple Details	3331
7. Dark Green Details	5933
8. Light Green Details	5822
9. Light Tan Details	0851
10. Pink Bow String	2532

12369-04 Drummer

1. Brown Details	1055
2. Orange Details	1115
3. Yellow Details	0811
4. Dark Purple Details	2832
5. Purple Details	2504
6. Pink Details	2532
7. Light Purple Details	3130

12369-05 Trumpet Player

1. Horn	0713
2. Brown Details	1055
3. Orange Brown Details	1154
4. Orange Details	0922
5. Blue Grey Details	3654
6. Dark Purple Details	3210
7. Light Purple Details	3331

12369-06 Guitar Player

1. Guitar	0101
2. Dark Green Details	5933
3. Medium Green Details	6133
4. Green Details	5822
5. Purple Details	2832
6. Medium Purple Details	2920
7. Light Purple Details	3130
8. Dark Brown Details	1355
9. Medium Brown Details	1233
10. Gold Details	0922
11. Tan Details	0651

12369-07 Sax Player

1. Medium Purple Details	2912
2. Dark Purple Details	2905
3. Pink Details	2532
4. Light Purple Hair Details	2910
5. Gold Sax Details	0940
6. Light Yellow Details	0622
7. Yellow Sax Details	0811
8. Green Shirt Details	5531
9. White Details	0101
10. Dark Gold Details	0821

12369-08 Trombone Player

1. Horn	3522
2. Dark Pink Details	2521
3. Purple Details	3211
4. Light Pink Details	2220
5. Medium Blue Details	3332
6. Light Blue Details	3350

12369-09 Clarinet Player

1. Purple Skin Details	2920
2. Medium Purple Skin Details	2910
3. Dark Pink Skin Details	2521
4. Dark Brown Skin Details	1154
5. Gold Skin Details	0821
6. Dark Grey Horn Details	0138
7. Light Grey Horn Details	3971
8. Dark Purple Horn Details	2715
9. Medium Purple Shirt Details	2810
10. Blue Shirt Details	3641
11. Dark Purple Shirt Details	3541
12. Medium Purple Details	3210
13. Light Blue Shirt Details	3640

12369-10 Colorful Notes

1. Dark Orange Details	1322
2. Gold Details	0922
3. Pink Details	2521
4. Purple Details	2510
5. Dark Purple Details	2711
6. Light Purple Details	3331



Jazz iPad Hip Bag

Supplies:

- 10" x 22" piece of fabric for body of bag
- 10" x 22" piece of fabric for body lining
- 9" x 22" piece of fabric for bag flap (do not cut until embroidery is complete)
- 9" x 22" piece of fabric for wrong side of bag flap
- 8" x 14" piece of fabric for inside of slip pocket on bag flap
- 7" zipper
- Fusible fleece (optional)
- Water soluble marker or tailor's chalk
- Glue stick
- (2) ¾" D-rings
- (2) ¾" swivel latches
- (2) 6" x 2" pieces of fabric to make tabs to hold D-rings
- 3" x 56" strip of fabric to make shoulder strap

Prepare Flap for Embroidery:

Refer to **Diagram A (on last page)** to mark your bag flap fabric (use a water soluble marker or tailor's chalk) for embroidery following the steps below:

- Draw a rectangle on your bag flap fabric that measures 9" x 12".
- Along both long edges and the bottom edge draw a line 1" to the inside.
- Along the top edge draw a line 1.5" to the inside.
- From the bottom edge draw a line 6.5" to the inside.
- From the top edge draw a line 4" to the inside.
- These lines will define your embroidery areas. Keep your embroidery centered within these two areas.
- Now is a good time to also mark the lines for your zipper.
- From the top side draw a line 4.5" to the inside.
- From the top side draw a line 5" to the inside.
- This drawn box will be used later to insert your zipper for your pocket.

Embroider:

- Using stabilizer that is appropriate for your fabric choice embroider desired designs. In our sample we used medium weight tear-away stabilizer and micro-fiber (faux suede look) fabric. Above the zipper we used design 12370-10 "Notes Border" from Pack 12370 Linework Musical Instruments and below the zipper we used design 12369-06 "Guitar Player" from pack 12369 Blues & Jazz.
- Trim jump stitches and carefully remove excess stabilizer from back of embroidery.

Cut:

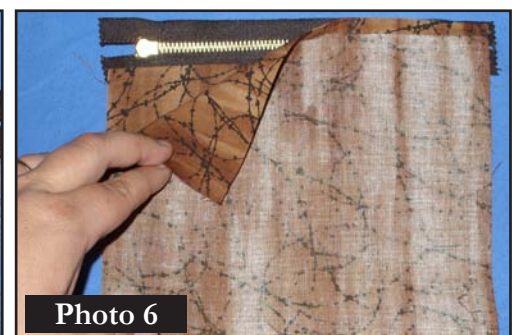
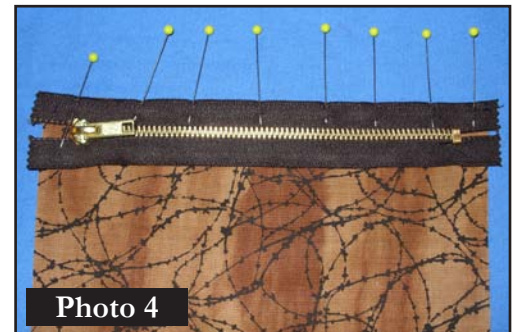
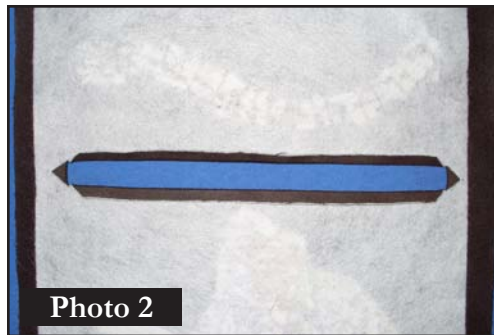
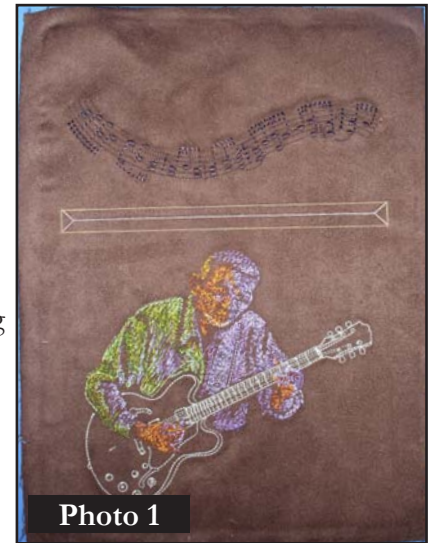
- Cut embroidered flap to 9" x 12" using the outermost drawn line as a guide. If your embroidery has caused any distortion to the fabric these lines make need to be adjusted slightly. (Again, we used a deep brown micro fiber fabric).
- 10" x 22" piece of fabric for body of bag (We used a deep brown micro fiber fabric).
- 10" x 22" piece of fabric for body lining (We used a barbed wire print quilting cotton fabric).

- 9" x 22" piece of fabric for wrong side of bag flap (We used a barbed wire print quilting cotton fabric).
- 8" x 14" piece of fabric for inside of slip pocket on bag flap (We used a barbed wire print quilting cotton fabric).
- Optional – Add fusible fleece to the wrong side of both bag body pieces and bag flap pieces to add body to the bag without adding bulk. Simply cut fusible fleece 1" smaller than each piece and fuse to wrong side of each piece, keeping fleece centered and out of seam allowance. (Example, for 10" x 22" bag body piece, cut fusible fleece to 9" x 21" and center on wrong side of bag body fabric so that there is ½" of fabric on all four sides.)

Create Zippered Slip Pocket in Flap Fabric:

Creating a zippered slip pocket is actually very simple. There are many hard-to-explain steps so we have included an abundance of Photos.

- By now you have a 7" x .5" box drawn on the front flap (between the embroidered areas) for the zipper. Draw a line down the center of this box stopping ¼" from each side then draw a diagonal line to each corner. **Photo 01**
- Cut along these newly drawn lines.
- Turn cut edges to the wrong side and press. **Photo 02**
- Turn short ends of pockets to wrong side ¼" and press. **Photo 03**
- Pin wrong side of zipper to the right short side of the pocket. Stitch approximately ⅛" from outer edge of zipper; do not stitch close to the teeth of the zipper. **Photo 04**
 - HINT: Opening and closing zipper will be necessary as the zipper pull may get in the way of the machine's foot.
- Turn zipper up and carefully press seam. **Photo 05**
- With right side of fabric and wrong side of zipper showing, pick up the opposite end of the pocket and fold it up so that the pressed under edge of fabric is flush with the opposite edge of the zipper. **Photo 06**
- Again, pin in place and stitch approximately ⅛" from outer edge of zipper, do not stitch close to the teeth of the zipper.



- At this point you will have a pocket with the sides still open (or a tube). **Photo 07**
- Position pocket so that zipper is closed, zipper pull is to your left and the pocket hangs below the zipper. **Photo 08**
- With just a standard glue stick, go around the wrong side of the opening in the bag flap with glue. **Photo 09**
- Pick up the bag flap and position it over the pocket, with the zipper showing through the “window”. (When zipper is closed, zipper pull should be to your left.) Apply pressure with your fingers to get the



Photo 7



Photo 8

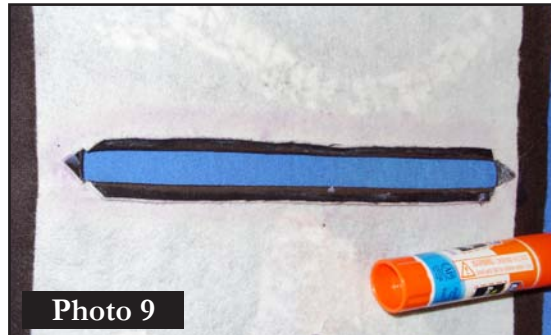


Photo 9



Photo 10

- zipper to stick to the bag flap. **Photo 10**
- Turn over bag flap to wrong side and make sure that the pocket fabric is below the zipper. (Put one pin in to make sure that the pocket stays in this position for the next step.) **Photo 11**
- Stitch right along the opening of the zipper along the two short sides and above the zipper. **DO NOT STITCH BELOW THE ZIPPER AT THIS POINT.** **Photo 12**
- Turn flap to wrong side, fold pocket up so that is now covering and above the zipper. (Put one pin in to make sure that the pocket stays in this position for the next step.) **Photo 13**
- Stitch right along the opening of the zipper along the bottom edge only.
- Your zipper is now stitched into place. **Photo 14**



Photo 11



Photo 12



Photo 14



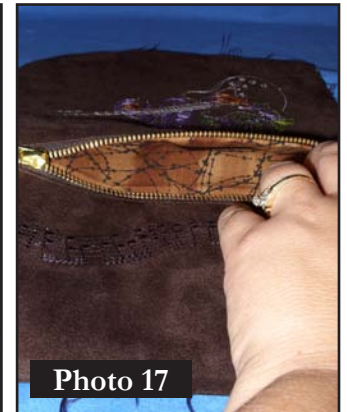
Photo 13

- You will now have a pocket hanging from the back side of the flap with the edges still open. **Photo 15**
- To close the edges of the pocket, fold the bottom half of the flap up and under, keeping the pocket lying flat, pin along both sides of the pocket.
- Position zipper pull to the center of the zipper and stitch ONLY the sides of the pocket from bottom fold up to the zipper, backstitching to reinforce at both the bottom and top. Do not sew through the zipper, just up to it. **Photo 16**
- You now have a pocket in the bag flap that looks nice both from the outside and the inside! **Photo 17**



Create Tabs with D-Rings:

- With right sides together, fold 6" x 2" fabric in half to make 6" x 1" tube.
- Stitch down long side using a 1/4" seam allowance.
- Press seam open, keeping seam down center. **Photo 18**
- Turn right side out and press.
- Edge stitch along both long edges.
- Insert fabric into D-ring and fold in half. Use a zipper foot to stitch close to D-ring. **Photo 19**
- Trim excess fabric to 3/4" below your stitching.
- Repeat to create second tab and set tabs aside.



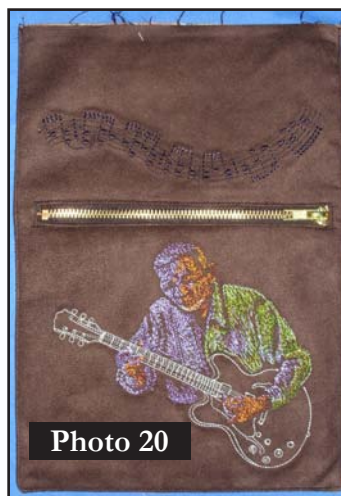
Construct the Flap:

- Place flap pieces with right sides together. (Position zipper pull in the center.)
- Using a 1/2" seam allowance, stitch around both sides and the bottom leaving the top open. (Keep the pocket out of the seam.)
- Clip corners and turn right side out; press.
- Edge stitch around flap, again, leaving top open. **Photo 20**
- Set flap aside.

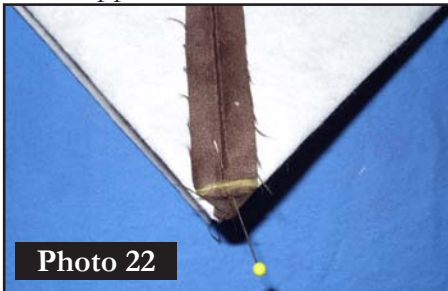


Construct the Bag:

- Fold the 10" x 22" fabric for bag body in half with right sides together to create a 10" x 11" piece of folded fabric. Pin along both sides.
- Stitch along both sides using a 1/2" seam allowance. Press side seams open **Photo 21**
- Repeat for 10" x 22" fabric for body lining except leave an opening in one side of the lining measuring 5" toward the bottom fold. This will be used to turn the entire bag right side out later.



- To form a gusset in the bottom of the bag, on each side of the bag, line up the side seam with the center bottom of the bag, forming a triangle. Mark the desired gusset width ($\frac{3}{4}$ ") across the triangle, dividing the width evenly on either side of the side seam. Stitch along this line. **Photo 22**
- Snip off corner points $\frac{1}{4}$ " from stitching line. **Photo 23**
- Repeat for body lining.
- Insert one of the tabs with D-ring attached inside the bag body (still turned wrong side out), lining up raw edges of tab with raw edges of top of bag body. Center of side seam, pin in place. Baste in place. Repeat on opposite side. **Photo 24**



- Insert the flap into the bag body with front of flap kissing the right side of the bag body. Center flap between side seams of bag body, line up raw edges and pin. Baste in place.
- Turn body lining right side out.
- Insert the body lining into the bag body, line up side seams and raw edges. Pin in place. (Right sides will be matching; flap will be sandwiched between the bag body and bag lining.) **Photo 25**
 - HINT: Make sure the tabs on each side are laying down flat as well as the attached D-rings.
 - HINT: Pin this step extra well and take your time lining up the raw edges. You'll thank yourself later.
- Stitch all the way around the top of the bag using a $\frac{1}{2}$ " seam allowance.
- Pull the lining out of the bag and turn the entire bag right side out through the opening left in the lining. **Photo 26**
- The bag will turn and all three sections will be outside. **Photo 27**



- Stitch the opening in the lining closed.
- Put the lining inside the bag and topstitch around top edge all the way around bag.

Create the shoulder strap:

- Fold shoulder strap fabric in half with right sides together to create a $1 \frac{1}{2}$ " x 56" strip.
- Stitch down long raw edge to create a tube using a $\frac{1}{2}$ " seam.
 - HINT: To aid turning the tube in the next step, take a length of yarn and nestle it in the fold of the tube

as you stitch down the raw edge. Once finished stitching the edge, stitch one short end closed being sure to catch the yarn, stitch over it a couple of times to reinforce it. **Photo 28**



- Turn tube right side out and iron flat with seam in the center.
 - HINT: If you used the yarn to aid in turning, simply use a chopstick to poke the closed end into the tube to get the turning started then pull on the opposite end of the yarn to quickly and easily turn the entire tube. I used microfiber fabric and it likes to “stick” to itself but using this method turning the tube was a cinch!
- Top stitch down both long sides.
- Mark a line 1" from each raw edge and another line 3" from each raw edge.

Photo 29

- Fold each raw end up to the first line and stitch in place. **Photo 30**
- Insert each end into the swivel latch. Fold end up to meet second drawn line and stitch in place. **Photo 31**
- Attach clips on handle to D-rings on bag.

