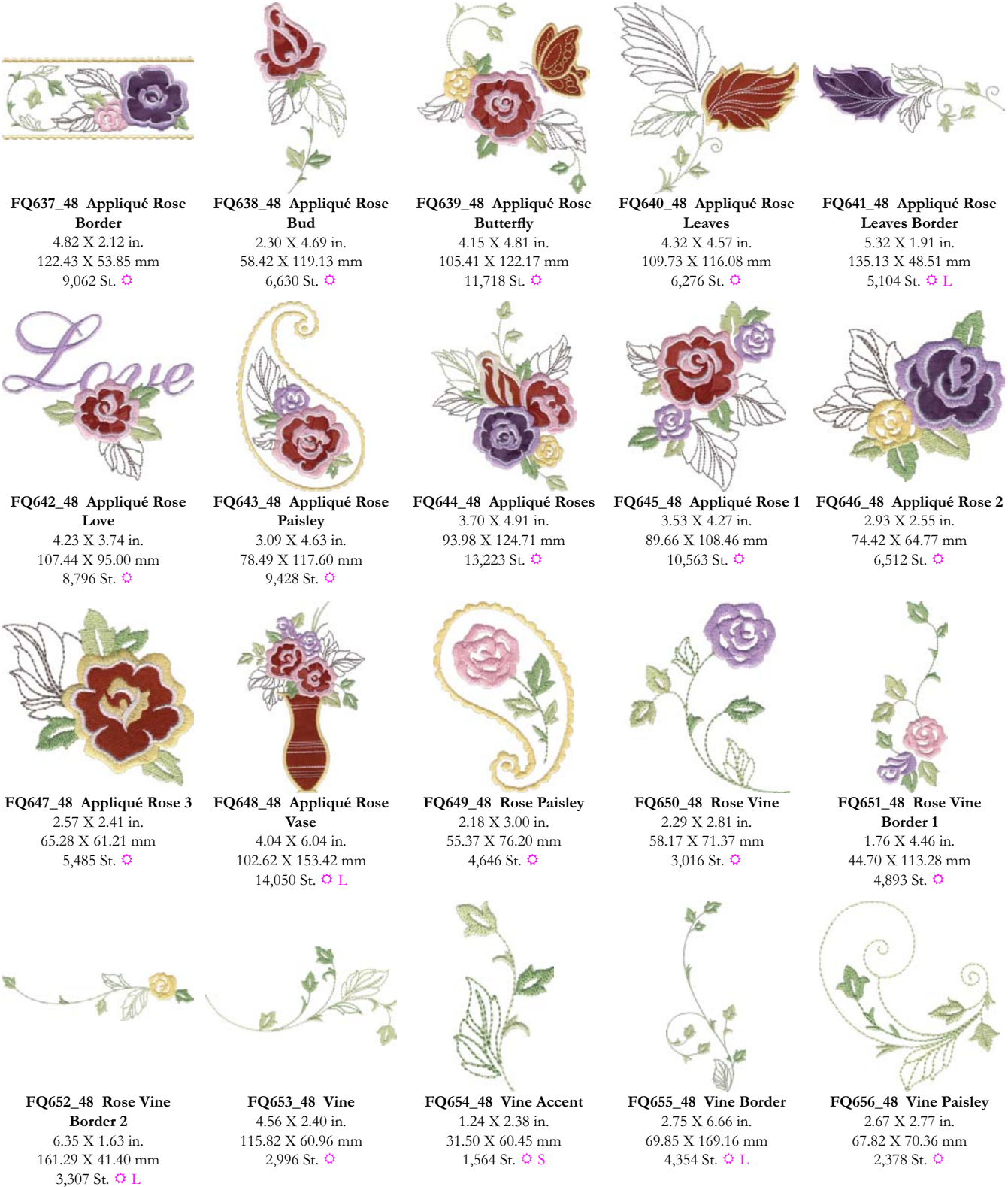


Note: Some designs in this collection were created using unique special stitches and/or techniques. To preserve design integrity when rescaling or rotating designs in your software, always rescale or rotate designs using the handles directly on-screen.



❄️ Design contains a loose fill.
❄️ Some white areas shown are not stitched.

L Design is larger than 5" (127 mm) in either direction.
S Design is smaller than 1.5" (38.1 mm) in either direction.

Listings below indicate color sample, stitching order and suggested thread color number, Isacord, Yenmet or YLI Variegated threads.

FQ637_48 Appliqué Rose

Border

- 1. Placement Stitch.....0640
- 2. Cut Line & Tackdown.....0640
- 3. Border.....0640
- 4. Dark Leaves5552
- 5. Medium Leaves & Stems.....5822
- 6. Light Leaves6051
- 7. Pink Rose2250
- 8. Rose Cover Stitch.....3040
- 9. Light Rose Shading0015

FQ638_48 Appliqué Rose

Bud

- 1. Placement Stitch.....5552
- 2. Cut Line & Tackdown.....5552
- 3. Dark Leaf.....5552
- 4. Light Leaves6051
- 5. Medium Leaves & Stem5822
- 6. Rose Cover Stitch.....2250
- 7. Light Rose Shading0015

FQ639_48 Appliqué Rose

Butterfly

- 1. Rose Placement Stitch3040
- 2. Rose Cut Line & Tackdown3040
- 3. Butterfly Placement Stitch3040
- 4. Butterfly Cut Line & Tackdown.....3040
- 5. Butterfly Body3040
- 6. Butterfly Cover Stitch.....0640
- 7. Dark Leaves5552
- 8. Light Leaves & Stems.....6051
- 9. Medium Leaves & Stems.....5822
- 10. Yellow Rose.....0640
- 11. Rose Cover Stitch.....2250
- 12. Rose Light Shading0015

FQ640_48 Appliqué Rose

Leaves

- 1. Placement Stitch.....0015
- 2. Cut Line & Tackdown.....0015
- 3. Leaf Linework0015
- 4. Cover Stitch.....0640
- 5. Light Leaves & Stem6051
- 6. Medium Leaf.....5822
- 7. Dark Leaf.....5552

FQ641_48 Appliqué Rose

Leaves Border

- 1. Placement Stitch.....0015
- 2. Cut Line & Tackdown.....0015
- 3. Leaf Linework.....0015
- 4. Cover Stitch.....3040
- 5. Dark Leaf.....5552
- 6. Medium Leaf.....5822
- 7. Light Leaves & Stems.....6051

FQ642_48 Appliqué Rose

Love

- 1. Placement Stitch.....3040
- 2. Cut Line & Tackdown.....3040
- 3. LOVE.....3040
- 4. Dark Leaf.....5552
- 5. Light Leaves6051
- 6. Medium Leaves5822
- 7. Cover Stitch2250
- 8. Rose Light Shading0015

FQ643_48 Appliqué Rose

Paisley

- 1. Placement Stitch.....5552
- 2. Cut Line & Tackdown.....5552
- 3. Dark Leaves5552
- 4. Medium Leaves5822
- 5. Light Leaf.....6051
- 6. Purple Rose.....3040
- 7. Cover Stitch2250
- 8. Rose Light Shading0015
- 9. Border.....0640

FQ644_48 Appliqué Roses

- 1. Yellow Rose Placement Stitch...6051
- 2. Yellow Rose Cut
Line & Tackdown6051
- 3. Pink Rose Placement Stitch6051
- 4. Pink Rose Cut
Line & Tackdown6051
- 5. Purple Rose Placement Stitch...6051
- 6. Purple Rose Cut
Line & Tackdown6051
- 7. Light Leaves & Stems.....6051
- 8. Dark Leaves5552
- 9. Medium Leaves5822
- 10. Small Yellow Rose.....0640
- 11. Yellow Rose Cover Stitch0640
- 12. Pink Rose Cover Stitch.....2250
- 13. Purple Rose Cover Stitch3040
- 14. Light Rose Shading0015

FQ645_48 Appliqué Rose 1

- 1. Placement Stitch.....5822
- 2. Cut Line & Tackdown.....5822
- 3. Medium Leaves5822
- 4. Light Leaves6051
- 5. Dark Leaves5552
- 6. Purple Roses3040
- 7. Rose Cover Stitch.....2250
- 8. Light Rose Shading0015

FQ646_48 Appliqué Rose 2

- 1. Placement Stitch.....5822
- 2. Cut Line & Tackdown5822
- 3. Medium Leaves5822
- 4. Light Leaves6051
- 5. Dark Leaves5552
- 6. Yellow Rose.....0640
- 7. Cover Stitch.....3040
- 8. Rose Light Shading0015

FQ647_48 Appliqué Rose 3

- 1. Placement Stitch.....5552
- 2. Cut Line & Tackdown.....5552
- 3. Dark Leaf.....5552
- 4. Medium Leaves5822
- 5. Light Leaves6051
- 6. Cover Stitch.....0640
- 7. Rose Light Shading0015

FQ648_48 Appliqué Rose

Vase

- 1. Rose Placement Stitch0015
- 2. Rose Cut Line & Tackdown0015
- 3. Vase Placement Stitch.....0015
- 4. Vase Cut Line & Tackdown.....0015
- 5. Vase Linework0015
- 6. Dark Leaves5552
- 7. Vase Cover Stitch.....0640
- 8. Light Leaves6051
- 9. Medium Leaves5822
- 10. Purple Roses3040
- 11. Rose Cover Stitch.....2250
- 12. Rose Light Shading0015

FQ649_48 Rose Paisley

- 1. Dark Leaves & Stem.....5822
- 2. Light Leaves6051
- 3. Rose2250
- 4. Border.....0640

FQ650_48 Rose Vine

- 1. Dark Leaves & Stems.....5822
- 2. Light Leaves6051
- 3. Rose3040

FQ651_48 Rose Vine

Border 1

- 1. Dark Leaves & Stems.....5822
- 2. Light Leaves & Stem6051
- 3. Purple Rose.....3040
- 4. Pink Rose2250

FQ652_48 Rose Vine

Border 2

- 1. Dark Leaves & Stem.....5822
- 2. Light Leaves6051
- 3. Rose0640

FQ653_48 Vine

- 1. Light Leaves & Stems.....6051
- 2. Dark Leaves & Stems.....5822

FQ654_48 Vine Accent

- 1. Light Leaves & Stem6051
- 2. Dark Leaves5822

FQ655_48 Vine Border

- 1. Dark Leaves & Stems.....5822
- 2. Light Leaves & Stems.....6051

FQ656_48 Vine Paisley

- 1. Dark Leaves & Stem.....5822
- 2. Light Leaves & Stems.....6051

Appliquéd Half Slip

SUPPLIES:

- Design #FQ638_48 from Rose Appliqué Signature Pack #12252
- Cotton Batiste (your hip measurement plus 6" by the finished length of the slip)
- Elastic (lingerie, stretch lace, or braided elastic) X your waist measurement plus ½"
- Lace for the lower edge of the slip (your hip measurement plus 6")
- Mettler Silk Finished thread to match the slip fabric
- Mettler Silk Finished thread to match the lace color
- Isacord Polyester Embroidery thread
- OESD PolyMesh Cut-Away Embroidery Stabilizer
- OESD Appliqué Fuse & Fix (optional)
- Temporary Spray Adhesive (101 quilt Basting Spray or 505 Spray and Fix)
- Organ Needles - Size 70/10 Sharp



CUTTING INSTRUCTIONS

1. Cut a rectangle of cotton batiste your hip measurement plus 6" by the desired finished length of the slip. If the measurement exceeds the fabric width, divide the measurement in half and cut two rectangles, on front and one back.
2. Place a piece of lingerie elastic around your waist and pull it comfortably snug. Do not stretch the elastic. Cut the elastic this measurement plus ½".
3. Cut a piece of edging lace the same width as the rectangle (your hip plus 6").

TO PREPARE THE DESIGN

- If desired, you can use your machine's layout feature, Explorations Embroidery Software, or other embroidery software to mirror the design and add a monogram to personalize your slip.

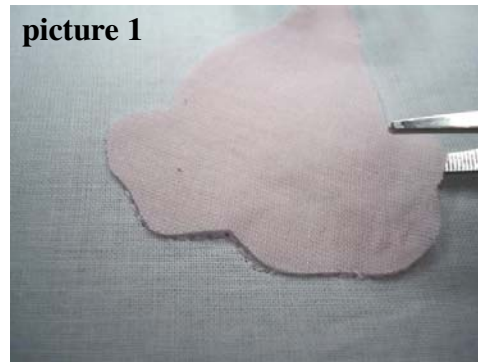
STITCH THE APPLIQUÉ DESIGN

4. Place a centering positioning mark for the design in the lower right side (as you are looking at the fabric on the cutting table) of the fabric rectangle.
5. Using a temporary spray adhesive, position a layer of OESD PolyMesh Cut-Away stabilizer against the wrong side of the slip fabric using the centering mark to center the stabilizer.
6. Hoop the stabilized fabric in the hoop and attach the hoop to the embroidery arm.

APPLIQUÉ - PRE-CUT OPTION

7. Stitch the Placement Stitch.
8. Iron the appliqué paper onto the wrong side of the appliqué fabric following the Appliqué Fuse and Fix instructions.
9. Print the appliqué template for the selected design. Roughly cut around the appliqué and spray the wrong side of the paper template with a temporary spray adhesive.
10. Position the paper appliqué template on the right side of the fabric. Trim the appliqué fabric piece along the template lines.
11. Peel the paper from the appliqué fabric piece, spray the back of the fabric piece, and, using the stitched Placement Stitch as a guide, position the appliqué fabric on the hooped slip fabric. **(picture 1)**

1. Stitch the remaining colors of the design, changing threads as indicated.
2. Remove the hoop from the embroidery arm and remove the fabric from the hoop. Following the stabilizer instructions, carefully remove the stabilizer from the wrong side of the slip fabric.



APPLIQUÉ - TRIM-IN-PLACE OPTION

3. Stitch the Placement Stitch. Position the appliqué fabric over the Placement Line. Stitch the Cut Line and stop the machine.
4. Remove the hoop from the embroidery arm but do not remove the fabric from the hoop.
5. Trim the appliqué fabric close to the Cut Line. **(picture 2)**
6. Return the hoop to the embroidery arm and stitch the remaining colors of the design changing threads as indicated.
7. Remove the hoop from the embroidery arm and remove the fabric from the hoop. Following the stabilizer instructions, carefully remove the stabilizer from the wrong side of the slip fabric.

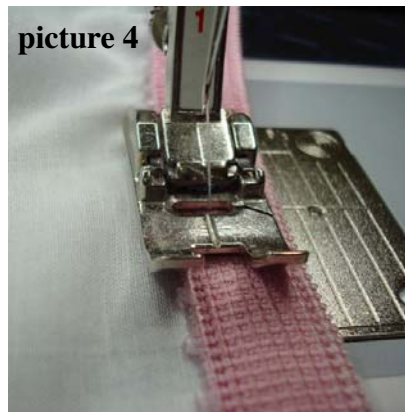


SLIP CONSTRUCTION

8. If using separate front and back pieces, construct one side seam using a French Seam.
9. Using the serger set for a rolled edge or a sewing machine with 4 mm Roll & Shell Hemmer Foot, finish the lower edge for the fabric rectangle with a rolled edge.
10. With the lower edge of the lace and the rolled edge of the fabric matching, pin the lace to the lower edge of the fabric.
11. Using a 1½ mm wide zig-zag and a 1½ mm stitch length, sew the lace header to the fabric. If you use an edgestitch foot, keep the blade of the edgestitch foot on the upper edge of the lace header. **(picture 3)**
12. Fold the slip in half lengthwise. Sew the side seam of the slip using a French Seam.
13. Using a serger or sewing machine, clean finish the upper edge of the slip.
14. Sew the ends of the elastic together with a ¼” seam. Find quarter divisions on the elastic and the top of the slip. Pin the elastic to the top of the slip, matching quarter points.

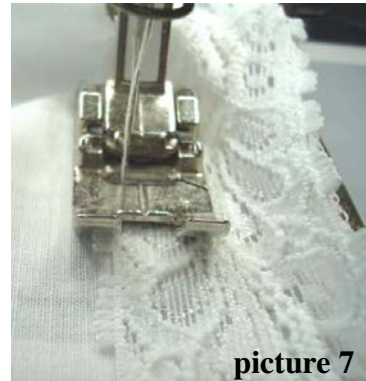
If you are using a picot edge elastic:

- Pin the elastic to the slip, wrong side of elastic to right side of slip with the picot edge down. While stretching the picot edge elastic to fit the slip fabric, zig-zag the elastic to the slip using a 4mm wide and 4mm long stitch. **(picture 4)**
- Bring the elastic to the inside of the slip and stitch in place using a running stitch set at a 3½ mm stitch width and a 3½ mm stitch length. **(picture 5)**
- Steam the elastic without touching the iron to the elastic. Let cool completely before handling.



If you are using stretch lace elastic: (picture 6)

- Pin the elastic to the top of the slip, matching the upper edge of the elastic to the upper edge of the slip.
- While stretching the stretch lace elastic to fit the slip fabric, stitch along the lower edge of the stretch lace elastic using a



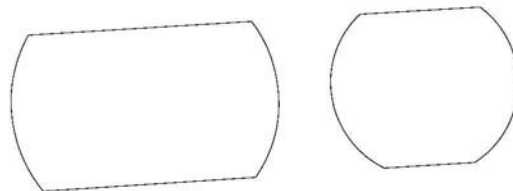
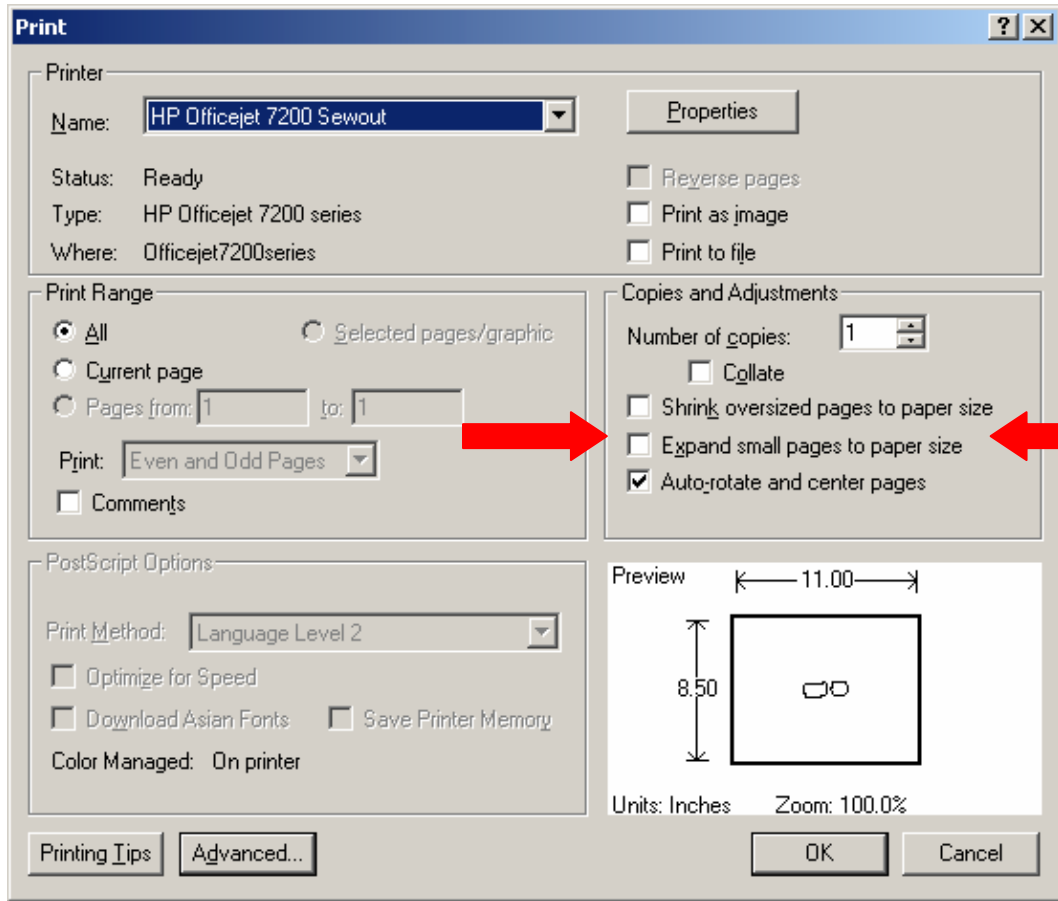
- zig-zag stitch with a 3½ mm stitch width and a 3½ mm stitch length.
- Using appliqué scissors, trim the excess fabric from behind the stretch lace elastic. (picture 7)
- Steam the elastic without touching the iron to the elastic. Let cool completely before handling.

If you are using braided elastic:

- Pin the elastic to the wrong side of the slip. While stretching the braided elastic to fit the slip fabric, zig-zag the left edge of the elastic to the slip using a 4 mm wide and 4 mm long stitch. (picture 8)
- Fold the upper edge of the slip down, encasing the elastic and stitch in place using a running stitch set at a 3½ mm stitch width and a 3½ mm stitch length. (picture 9)
- Steam the elastic without touching the iron to the elastic. Let cool completely before handling.



Use these handy appliqué patterns to pre cut your appliqués. Before printing, make sure that the scaling options are not checked in your print dialogue box.



FB293_48

Cut out two separate pieces.

